

# ANALYTICAL SOLUTION

For Research & Academics



Sci  
Spec

# Analysis of **CANNABIS & KRATOM**

## **TESTING**

Residual  
Solvents

Terpenes

Pesticides /  
Herbicides

**GC**

**GC-MS**

**GC-MS/MS**

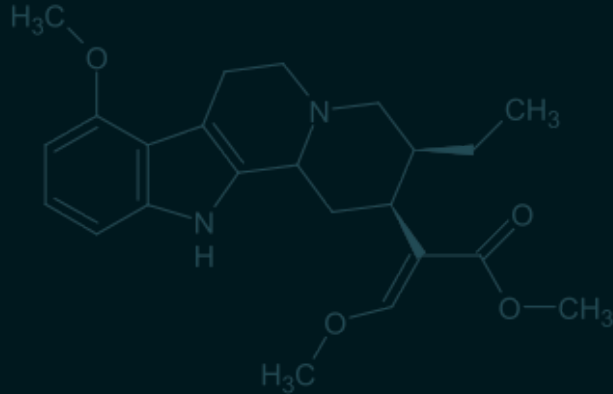


**Gas Chromatograph**

Trace 1600 Series GC

**Gas Chromatograph  
Mass Spectrometer**

ISQ/TSQ Series GC-MS/MS



# PARAMETER

Mycotoxins/  
Aflatoxins

Potency  
(Cannabinoids /  
Mitragynine)

Heavy  
Metals

LC-MS/MS

ICP-MS



**Liquid Chromatograph  
Mass Spectrometer**

TSQ Series LC-MS/MS



**Inductively Coupled Plasma  
Mass Spectrometer**

iCAP RQ ICP-MS

# FOOD SAFETY ANALYSIS

Instrument	Testing Parameter				
	Pesticide Residues	Vet Drug Residues	Persistent Organic Pollutants	Food Contact Materials	Food Authenticity & Profiling
HRAM LC-MS and/or GC-MS	✓	✓	✓	✓	✓
GC, GC-MS, GC-MS/MS	✓		✓	✓	
Magnetic Sector GC-HRMS			✓		
HPLC, LC-MS or LC-MS/MS	✓	✓		✓	
IC and IC-MS	✓		✓		✓
Isotope Ratio Mass Spectrometry					✓
Automated Sample Preparation	✓	✓	✓	✓	✓

## Liquid Chromatograph Mass Spectrometer

TSQ Series LC-MS/MS

- Non-volatile & polar compounds detection
- Confident targeted screening and precise quantitation



# ENVIRONMENTAL ANALYSIS

Instrument	Testing Parameter				
	Polyfluoroalkyl substances	Persistent Organic Pollutants	Disinfecting by-products	Heavy Metals	Microplastic
HRAM LC- MS and/or GC-MS	✓	✓	✓		✓
GC, GC-MS, GC-MS/MS		✓	✓		✓
HPLC, LC-MS or LC-MS/MS	✓				
IC and IC-MS			✓		
AAS, ICP-OES, ICP-MS				✓	
Automated Sample Preparation	✓	✓	✓		



## Gas Chromatograph Mass Spectrometer

### ISQ/TSQ Series GC-MS/MS

- Volatile compounds detection
- Ultimate performance while consistently producing trusted quantitative results

## Inductively Coupled Plasma Mass Spectrometry

### iCAP RQ ICP-MS

- Maximized productivity and robustness for trace elemental analysis



# Get Better Solution for your **SAMPLE PREPARATION**



**ThermoFisher**  
SCIENTIFIC

**EXTREVA ASE**  
Accelerated Solvent Extractor



**ThermoFisher**  
SCIENTIFIC

**ASE350**  
Solvent Extraction



**MARKES**  
international

**Centri**  
Volatile Compound

**Solid**

**Semi-Solid**

**SAMPLE HANDLING**

**SAMPLE PREPARATION**

- Solvent Extraction
- Solid-phase Extraction (SPE)
- Evaporation
- Derivatization
- Centrifugation
- Dilution
- Preconcentration

Change to **Automation**

- Convenience
- Save Time
- Save Chemical
- Increase Accuracy and Precision

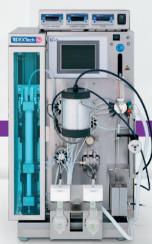
**ThermoFisher**  
SCIENTIFIC



**LC**  
Tech

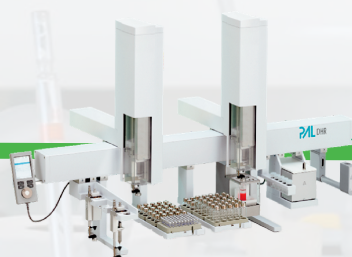
**Autotrace 280**  
Large-volume SPE

**FREESTYLE**  
SPE & Evaporation



**LC**  
Tech

**DEXTech**  
PCBs & Dioxins Cleanup



**CTC Analytics**

**PAL System**  
Fully Automated Sample Preparation

**Liquid**

**Gas**

**INSTRUMENT  
ANALYSIS**

**DATA  
ANALYSIS**

VISIT US

[www.scispec.co.th](http://www.scispec.co.th)



scispec



02-454-8533

